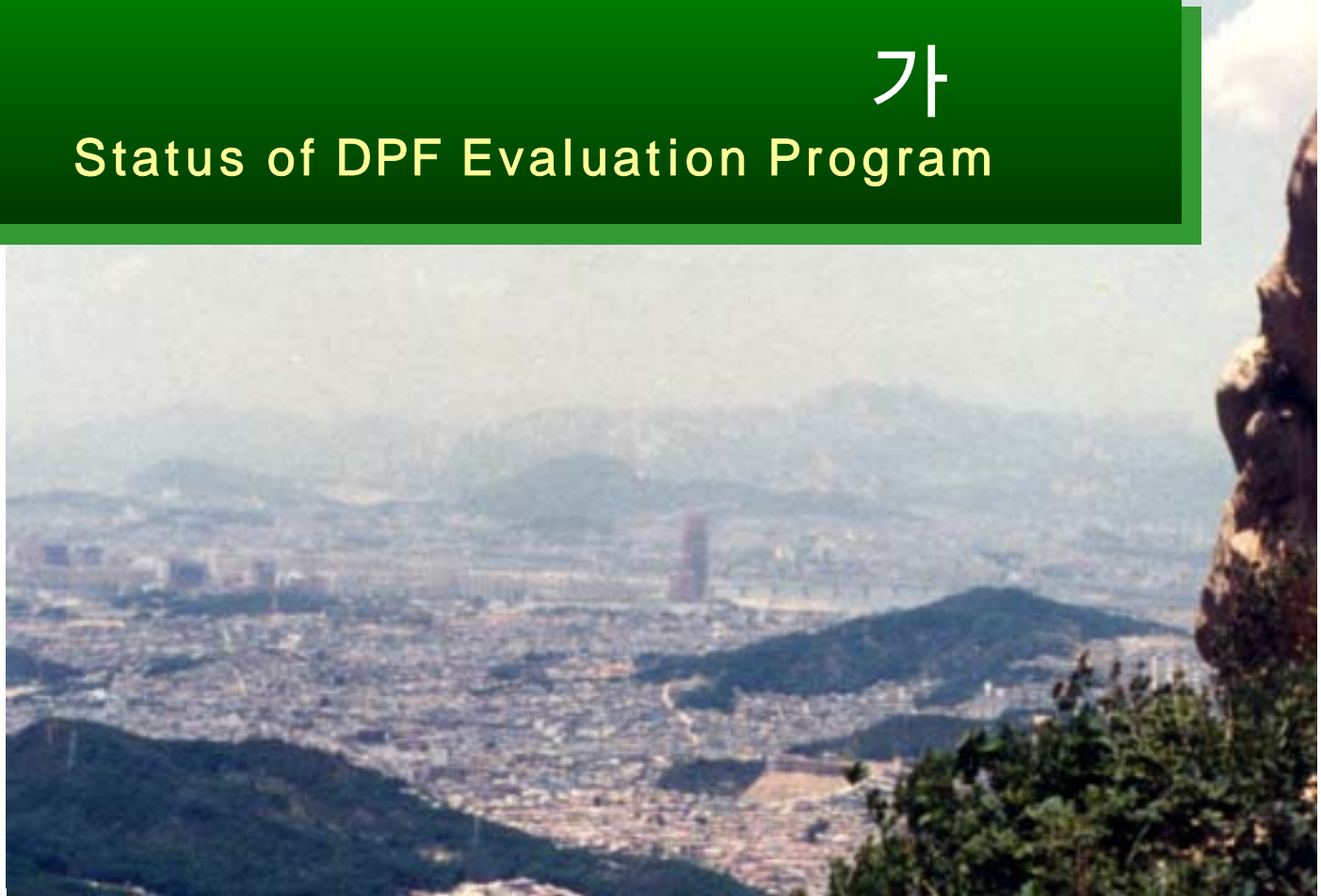


- 2003/4/11

# 가 Status of DPF Evaluation Program



**DPF Research Lab.**  
[www.dpf.kimm.re.kr](http://www.dpf.kimm.re.kr)



/  
[yjeong@kimm.re.kr](mailto:yjeong@kimm.re.kr)  
[www.autoenv.org](http://www.autoenv.org)

## •

가 , 가 ,

- ”, “ (PM) 가 “ .

## •

-

- : **70%, 80%**
- : 80%
- . : 80%

- : 12 km

- 가 : ( )

**3 EURO4 가**

- [Redacted]

- : D-13 ( ESC- )  
CVS-75
- 가 : 10- /
- : ( , 가 , , )  
( , )
- : 3 ( 6 km, 4 km)

- 가.

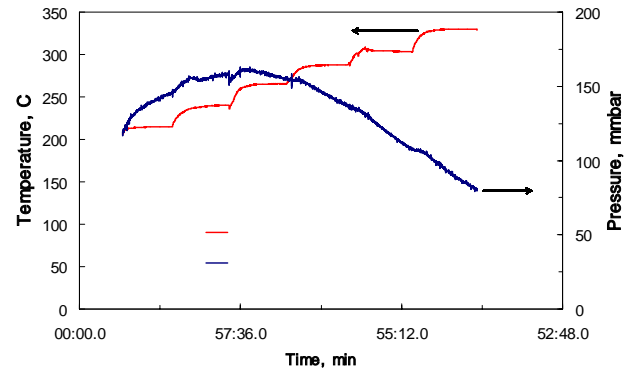
- , 가
- 
- , , 가
- 
- 
- 
-

# 1 (Screen Test) 가

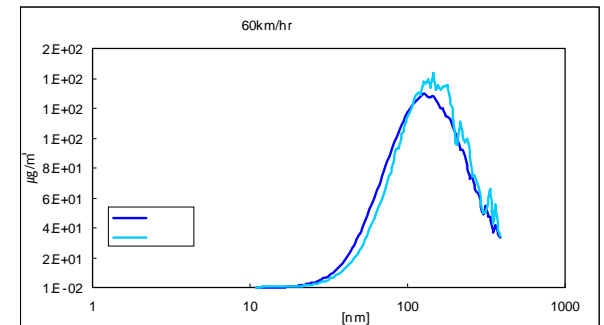
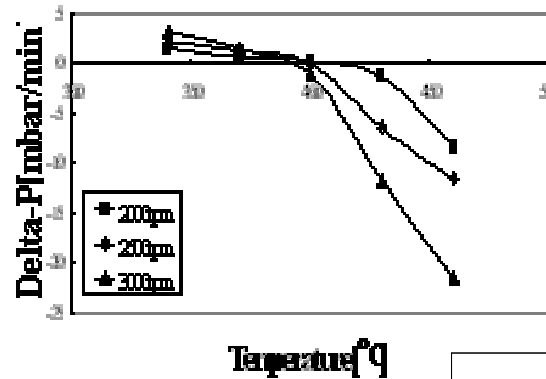
			PM
/ SK	CDPF		
Johnson Matthey	CRT		
Engelhard / TEMS	DPX		
INTERMET, LTD	Trap - Muffler System	가	
( ) -			
	NOx	PM	
( )			

# 2 가

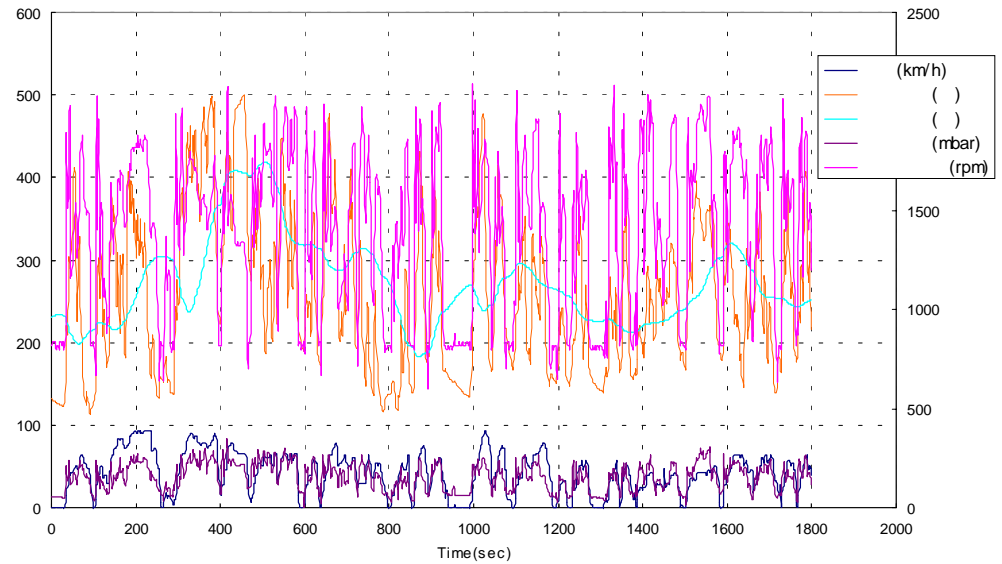
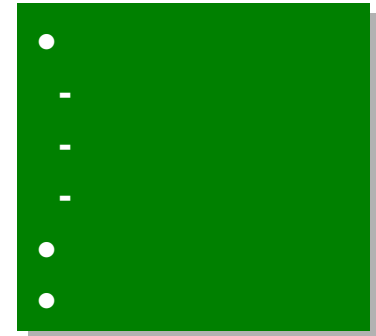
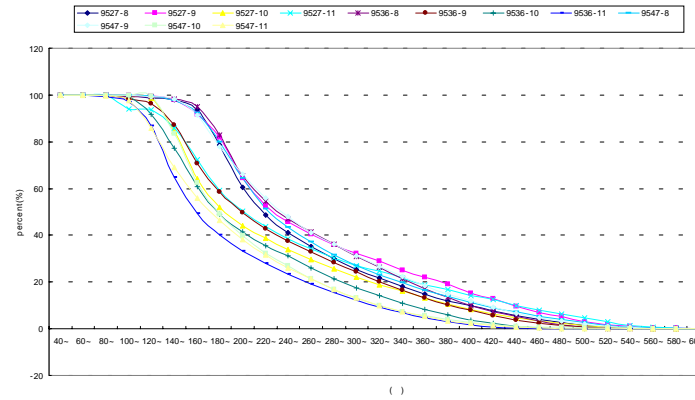
/ SK	( )	( )
Johnson Matthey	(ULSD 가)	( )
Engelhard / TEMS	,	( )
INTERMET, LTD		( , )
		( )
( )		( )
Peugeot 607	가(4 km)	



- BPT
- PM







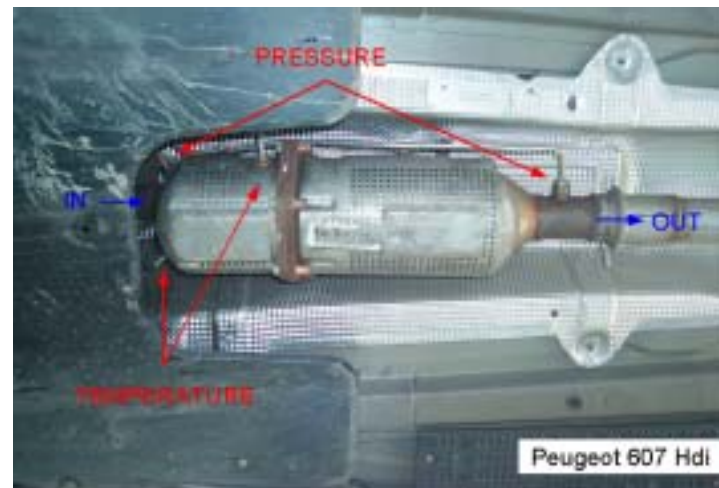
# Peugeot 607

- 1/2



## Vehicle Spec.

<b>Maker</b>	Peugeot
<b>Model</b>	607 2.2HDI
<b>Year</b>	2001
<b>Weight</b>	2,130kg
<b>Type</b>	4 S, 4 Cyl.
<b>In. air</b>	NA
<b>Displ.</b>	2,179cc
<b>Max P.</b>	98kw/4000rpm
<b>Max T.</b>	314Nm/2000rpm





# 가

- PM

- 80-90% ( 01-%)
- 40-50%

- 

- 10 km 가

- 

- : ( 가 ), ,
- 98 ( , )
- 98 ( )
- 가

- 

- 

- Peugeot 607

- CR 가

# PM

2003

• ( )

(HDD)	25.5 (5.3%)	7 (4.5%)
(MDD)	49.4 (10.7%)	16 (10%)
(LDD)	387.1 (84%)	133 (85.5%)
(Total)	<b>462</b> ( 1,475 31%)	<b>156</b> ( 582 27%)

• PM ( / )

(HDD)	11,435 <b>(48%)</b>	
(MDD)	4,001 (17%)	
(LDD)	8,371 <b>(35%)</b>	
(Total)	23,807	

\* : 35 / 5

# PM

- 2007 DPF
- 2005 DPF
- 2006 DPF
- 2006 DPF

	2007 EURO4 - DPF	2006 EURO4 - DPF - SCR 가
	RV, 2006 EURO4 - DPF 2005 EURO3.5 - DPF 50%	2005 EURO3 - DPF 2000 - 2006 2008 EURO5 Nanoparticle - DPF+NOx

# DPF

- Retrofit**

- 96

- 96 ( + )

- Retrofit**

- Passive + Active Combination

	<p><b>Passive + active Combination</b></p> <p>2000 2005(?)</p>	<p>Passive + Active</p> <p>2005 2007</p>
	<p>Passive + Active Combination</p>	<p><b>Passive Type</b></p> <p>, 2000 2003(?)</p>

# Retrofit

## • 1 : 2003-2008

- ( )
- 2003 가
- DPF 15 ( )
- ( 가 , LPG ) retrofit
- Retrofit DPF

## • 2 : 2006-2012

- ( )
- 50%

## • 3 : 2008-2012

- NOx
-

# DPF

- 

- 가, ,
- ( )
- Database

- 

- (Ash)
- 
- ( )
- :
- :
-

• 가 ( )

- PM : 3

- 80%
- 50-80%
- 25-50%

- Warranty : 20 km

- : 3 ( 1/2)

- : 100 ( )

• Retrofit DPF

- retrofit

-

Active type

DPF + EGR

-

Caterpillar

Retrofit Division

retrofit DPF

# DPF 가

## • CARB Retrofit verification procedure

### - 3 Level

- Level 1 : 25% - 50% PM
- Level 2 : 50% - 85%
- Level 3 : PM 85%                      0.01 g/bhp-hr
- : 5 /150,000                      33%
- 4 /100,000                      (warranty)

## • (TMG) 가

### - 5 Category

- 94    98                      2003
- 98    2003
- :                      1/2
- - DPF            : 40                      ,                      30
- - DOC            : 20                      ,                      10

## • VERT Program

# Thank You !!



e - mail: [yjeong@kimm.re.kr](mailto:yjeong@kimm.re.kr)  
<http://www.autoenv.org>